

WGS 84 POSITIONS can be plotted directly on this chart

RIVER HUMBER IMMINGHAM ROADS

DEPTHS IN METRES
SCALE 1 : 5000

SURVEYED BY
HARBOUR MASTER, HUMBER
ASSOCIATED BRITISH PORTS
8th to 17th February 2017

Depths are in metres and decimetres reduced to the chart datum given below
Underlined> figures are drying heights in metres and decimetres above chart datum
Overhead clearance heights are above Highest Astronomical Tide
TIDAL LEVEL AND CHART DATUM

PLACE	Heights in metres above Chart Datum				Chart Datum and remarks
	M.H.W.S.	M.H.W.N.	M.L.W.N.	M.L.W.S.	
IMMINGHAM	7.3	5.8	2.6	0.9	3.9m below O.D. Newlyn Being approx. L.A.T.

Projection :- Transverse Mercator. National Grid references are given along borders of chart.

Light stars without legends represent two fixed lights displayed vertically and are seen as red to port and green to starboard when viewed together.
When every care was taken in the preparation of this Chart, which is intended to provide accuracy with the data which is available, British Ports cannot be held responsible for any error or omission, or for any damage or loss which may result from the use of the Chart, or for any error or omission in the data which is available, or for any error or omission in the data which is available, or for any error or omission in the data which is available.

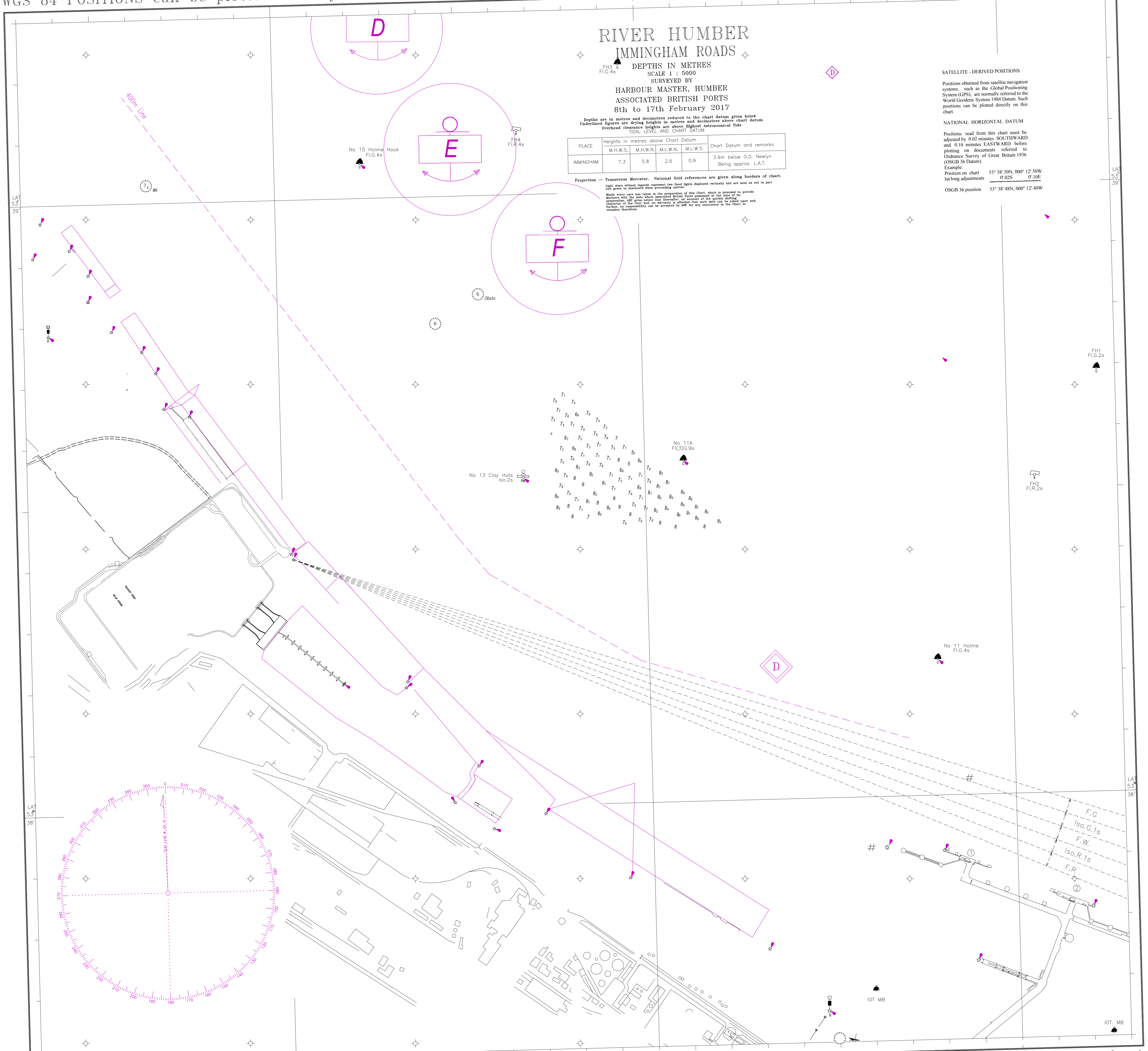
SATELLITE - DERIVED POSITIONS

Positions obtained from satellite navigation systems, such as the Global Positioning System (GPS), are normally referred to the World Geodetic System 1984 Datum. Such positions can be plotted directly on this chart.

NATIONAL HORIZONTAL DATUM

Positions read from this chart must be adjusted by 0.02 minutes SOUTHWARD and 0.10 minutes EASTWARD before plotting on documents referred to the Ordnance Survey of Great Britain 1936 (OSGB 36 Datum).

Example:
Position on chart 53° 38' 50N, 000° 12' 50W
lat/long adjustments 0.02S 0.10E
OSGB 36 position 53° 38' 48N, 000° 12' 40W



WGS 84 POSITIONS can be plotted directly on this chart